



Optimize Your Wells with DeepData



DeepData is a web application that helps Operators maximize production, streamline operations, and operate profitably. It captures rich operational data, enabling you to visualize and optimize your operational processes; e.g. determining the optimal well spacing, perf spacing, proppant and fluid types and amounts. Your answer to higher EUR's is buried in your data, let us help you uncover it.

You can also share data with Operators, NonOps, and others. You remain in complete control over what well data you share with your partners. Like a LinkedIn, you simply invite data sharing partners to join, then you select which wells and what capabilities you want to share with them. DeepData then displays your data in context with rich offset data using 40,000 different visualizations and head-to-head comparisons. DeepData extracts best practices and helps you refine your methods for each target zone.

The [Shale 2.0 white paper](#) by Mark Mills describes how the next wave of well innovation will be driven by Big Data analytics, enabling increased well production, with reduced costs. The first step is collecting clean and comprehensive operational data. DeepData's supplier-driven data collection vastly improves this process, resulting in better data faster. Then DeepData helps you turn this data into valuable insight.

If you're like most Operators you have well data stored in various data silos, databases, spreadsheets, post job reports, and more. DeepData consolidates that data, extracts key metrics and then delivers insight. You use the best, most advanced equipment to complete your wells; why wouldn't you use the most advanced tool available, to get more hydrocarbons out of your wells at a lower cost? DeepData is that tool.

Features

Integrated Completion Workflow

Not a collection of tools, but a single integrated solution purpose-built for managing completion data.

Web-Based Software

Access from your web browser, nothing to install, update or maintain.

Generates 40,000 Different Interactive Graphs

Simply select the variables and groupings and get an interactive crossplot to find optimal completion solutions based on any comparison metric. Interact, save, print, export and share your graphs with co-workers.

Service Provider Data Collection

No more manual data entry from completion reports and job logs, have your SPs enter the data directly, resulting in more complete data and fewer errors.

Head-to-Head Well Compare

Compares wells, normalized by lateral foot, with the click of a button.

Powerful Search

Search and filter wells by a number of characteristics. Handles ranges and lists as well.

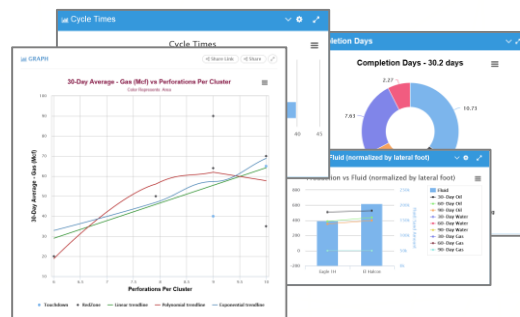
Quick & Easy Data Import

In 3 minutes you can map any data source into DeepData and save those maps for reuse.

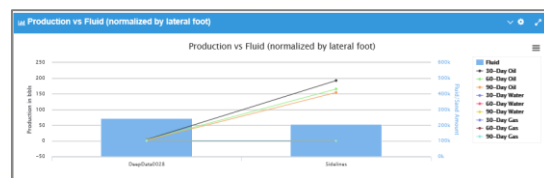
Benefits

Simplifies many process that span multiple tools, resulting in dramatically better data communication and workflow.

1. Turns data into a corporate asset, no longer impacted by employee departures
2. Exponentially faster product evolution
3. Superior support
4. All data is securely backed-up in the cloud



Do you spend 10 days of data entry and quality control to every day of data analytics? Not anymore, get your data entered directly by your service providers.



Assemble the perfect collection of wells to compare, graph or export quickly and easily.

No more spreadsheet import Hell, getting data into DeepData is push-button simple.

Features

Quickly identify potential DLS issues in your wellbore and properly plan your completion.

Generates Key Metrics, and Graphs Them by Stage

Paste KPI graphs into presentations and reports.

Powerful and Beautiful Dashboard Visualizations

Automatically compares cycle times and cycle costs, by function, as well as production and more, without requiring a single click on your part.

Track Personnel for Each Well

Tracks all personnel associated with each well in a simple and visual format.

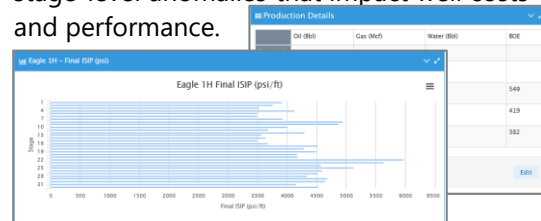
Comprehensive Well and Stage Information

Stage-based completion data: Casing, Production, Cycle Times and Cycle Costs, Completion Milestones, Completion Tasks and more.

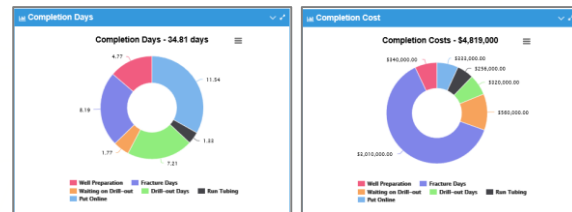
Benefits

You and your service providers know exactly where dogleg severity spikes enabling a safer and less expensive completion.

Enables you to find screen-outs and other stage-level anomalies that impact well costs and performance.

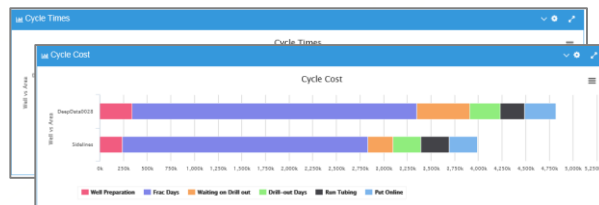


Keep your finger on the pulse of your business and immediately compare each well to area averages to know how your completions optimization is progressing.



Know the key personnel responsible for your wells both from your company and your service providers, so you know who is getting the best results.

Comprehensive and well organized data in a single location enables you to drill down to understand your wells and how to optimize them.



Features

Operator-Controlled Data Sharing

Invite NonOps, then select the wells you want to share, and the functionality you want to give them...and your job is done.

Store Attachments Associated with Each Well

Completion reports, images, service provider invoices, all are stored and associated with a specific well.

Multi-Platform

The application adjusts to any device and screen size.

Benefits

1. No more emailing all sorts of PDFs and spreadsheets to NonOps...it is all automated and controlled by you.
2. Ideal for selling assets, invite bidders into a virtual data room, then when the sale is completed, turn off access and transfer the wells to the new owner.

No more complex and inefficient filing systems for completion reports, job logs, invoices and more. They are easily available online for each well.

Use a phone in the field, an iPad from home and a laptop with a massive screen at work, it adjusts to use any screen size, beautifully.

